

**RPL36A Antibody (monoclonal) (M02)****Mouse monoclonal antibody raised against a partial recombinant RPL36A.****Catalog # AT3707a****Specification**

---

**RPL36A Antibody (monoclonal) (M02) - Product Information**

Application	WB, IF
Primary Accession	<a href="#">P83881</a>
Other Accession	<a href="#">NM_021029</a>
Reactivity	Human, Mouse, Rat
Host	mouse
Clonality	Monoclonal
Isotype	IgG2a Kappa
Calculated MW	12441

**RPL36A Antibody (monoclonal) (M02) - Additional Information****Gene ID** 6173**Other Names**

60S ribosomal protein L36a, 60S ribosomal protein L44, Cell growth-inhibiting gene 15 protein, Cell migration-inducing gene 6 protein, RPL36A, RPL44

**Target/Specificity**

RPL36A (NP\_066357, 7 a.a. ~ 106 a.a) partial recombinant protein with GST tag. MW of the GST tag alone is 26 KDa.

**Dilution**

WB~~1:500~1000

IF~~1:50~200

**Format**

Clear, colorless solution in phosphate buffered saline, pH 7.2 .

**Storage**

Store at -20°C or lower. Aliquot to avoid repeated freezing and thawing.

**Precautions**

RPL36A Antibody (monoclonal) (M02) is for research use only and not for use in diagnostic or therapeutic procedures.

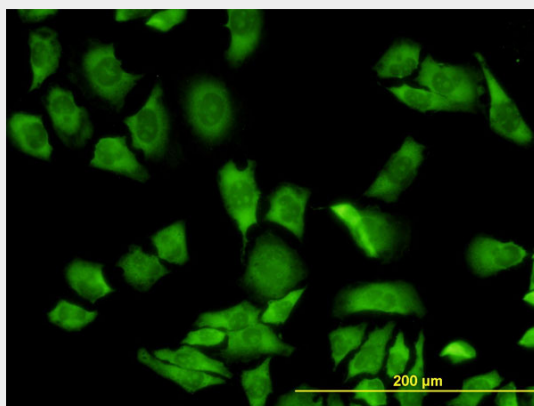
**RPL36A Antibody (monoclonal) (M02) - Protocols**

Provided below are standard protocols that you may find useful for product applications.

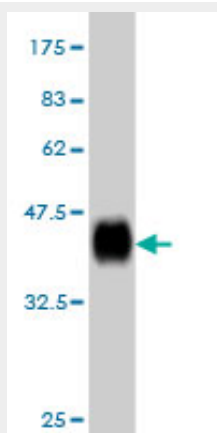
- [Western Blot](#)
- [Blocking Peptides](#)

- [Dot Blot](#)
- [Immunohistochemistry](#)
- [Immunofluorescence](#)
- [Immunoprecipitation](#)
- [Flow Cytometry](#)
- [Cell Culture](#)

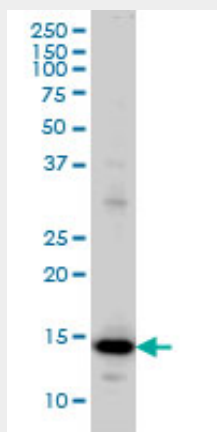
### RPL36A Antibody (monoclonal) (M02) - Images



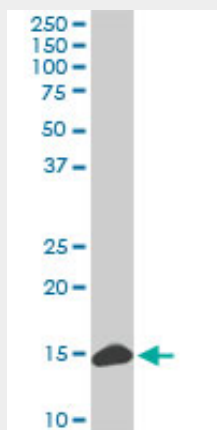
Immunofluorescence of monoclonal antibody to RPL36A on HeLa cell. [antibody concentration 10 ug/ml]



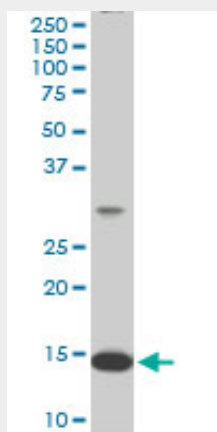
Antibody Reactive Against Recombinant Protein. Western Blot detection against Immunogen (36.74 KDa) .



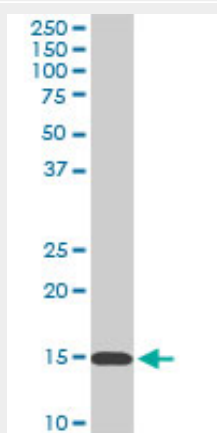
RPL36A monoclonal antibody (M02), clone 6H1 Western Blot analysis of RPL36A expression in HeLa ( (Cat # AT3707a )



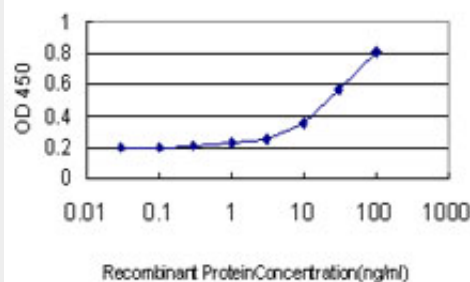
RPL36A monoclonal antibody (M02), clone 6H1. Western Blot analysis of RPL36A expression in PC-12 ( (Cat # AT3707a )



RPL36A monoclonal antibody (M02), clone 6H1. Western Blot analysis of RPL36A expression in Raw 264.7 ( (Cat # AT3707a )



RPL36A monoclonal antibody (M02), clone 6H1. Western Blot analysis of RPL36A expression in NIH/3T3 ( (Cat # AT3707a )



Detection limit for recombinant GST tagged RPL36A is approximately 1ng/ml as a capture antibody.

### **RPL36A Antibody (monoclonal) (M02) - Background**

Cytoplasmic ribosomes, organelles that catalyze protein synthesis, consist of a small 40S subunit and a large 60S subunit. Together these subunits are composed of 4 RNA species and approximately 80 structurally distinct proteins. This gene encodes a ribosomal protein that is a component of the 60S subunit. The protein, which shares sequence similarity with yeast ribosomal protein L44, belongs to the L44E (L36AE) family of ribosomal proteins. Although this gene has been referred to as ribosomal protein L44 (RPL44), its official name is ribosomal protein L36a (RPL36A). This gene and the human gene officially named ribosomal protein L36a-like (RPL36AL) encode nearly identical proteins; however, they are distinct genes. As is typical for genes encoding ribosomal proteins, there are multiple processed pseudogenes of this gene dispersed through the genome.

### **RPL36A Antibody (monoclonal) (M02) - References**

Large-scale mapping of human protein-protein interactions by mass spectrometry. Ewing RM, et al. Mol Syst Biol, 2007. PMID 17353931. The DNA sequence of the human X chromosome. Ross MT, et al. Nature, 2005 Mar 17. PMID 15772651. The status, quality, and expansion of the NIH full-length cDNA project: the Mammalian Gene Collection (MGC). Gerhard DS, et al. Genome Res, 2004 Oct. PMID 15489334. The molecular mechanics of eukaryotic translation. Kapp LD, et al. Annu Rev Biochem, 2004. PMID 15189156. Over-expression of the ribosomal protein L36a gene is associated with cellular proliferation in hepatocellular carcinoma. Kim JH, et al. Hepatology, 2004 Jan. PMID 14752831.